



## Vibrating Table 600 X 400mm Table Top. 220-240V 50Hz 1Ph. Supplied with clamping assembly

Code: [34-6250/01](#)

Product Group: [Vibrating Table](#)

The ELE vibrating table is a compact unit providing controlled vibro-compaction in the laboratory, using cube or cylinder moulding equipment.

Vibrating table mounted on a steel stand, supplied with clamp assembly.

Complies to EN 12390-2, EN 12350-6 (BS 1881-107), EN 12350-7 (BS 1881-106)

### Standards

EN 12390-2, EN 12350-6, EN 12350-7

### Further Information

**\*\*NOT AVAILABLE FOR SALE IN THE USA\*\***

3000 cycles per minute. For 220 - 240 V AC, 50 Hz, 1 ph.

### Specification

Dimensions (table top)	600 x 400 mm
Maximum no. Cube moulds	2 x 150 mm <sup>2</sup>
Clamp Assembly	Single
Weight	60 kg

### Accessories



#### Compacting Bar 25mm Sq X 380mm

Code: [34-2910](#)

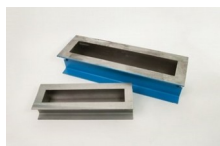


## Wire Brush

Code: 81-0705

---

## Alternatives



### 100 X 100 X 500mm Beam Mould.

Code: 34-5003



### 100mm Cube Mould 2-Part Clamp Type. Cast Iron Construction. BS EN Compliant.

Code: 34-4650



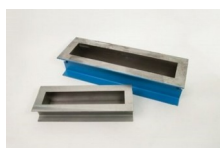
### 100mm Cube Mould 4-Part Clamp Type. Cast Iron Construction. BS EN Compliant.

Code: 34-4520



### 100mm Dia Cylinder Mould 200mm Long.

Code: 34-5210



### 150 X 150 X 750mm Beam Mould.

Code: 34-5053



**150mm Cube Mould 2-Part Clamp Type. Cast Iron Construction. BS EN Compliant.**

Code: [34-4670](#)



**150mm Cube Mould 4-Part Clamp Type. Cast Iron Construction. BS EN Compliant.**

Code: [34-4570](#)



**150mm Dia Cylinder Mould 150mm Long.**

Code: [34-5230](#)



**150mm Dia Cylinder Mould 300mm Long.**

Code: [34-5260](#)



**200mm Cube Mould Clamp Type. Cast Iron Construction. Stamped Mould Sections. EN Compliant.**

Code: [34-4620](#)